

HOTĂRÂRE

privind aprobarea Organigramei și Statului de funcții ale
Spitalului de Urgență Târgu Cărbunești, pe anul 2021

Consiliul Local al orașului Târgu Cărbunești, având în vedere:

- proiectul de hotărâre nr. 32 din 06.04.2021; referatul de aprobare nr. 32/1 din 06.04.2021;
- raportul de specialitate nr. 6279 din 08.04.2021; rapoartele de avizare ale comisiilor de specialitate;
- Nota de fundamentare a Spitalului de Urgență Târgu Cărbunești cu nr. 2001 din 24.03.2021 înregistrată la Primăria Târgu Cărbunești cu nr. 5220 din 24.03.2021;
- Ordinului Ministerului Sănătății nr. 1224/2010 privind aprobarea normativelor de personal pentru asistență medicală spitalicească, precum și pentru modificarea și completarea Ordinului ministrului sănătății publice nr. 1.778/2006 privind aprobarea normativelor de personal, cu modificările și completările ulterioare;
- Prevederile Legii nr. 95/2006, privind reforma în domeniul sănătății, republicată, cu modificările și completările ulterioare;
- Prevederile O.U.G. nr. 162/2008 privind transferul ansamblului de atribuții și competente exercitate de Ministerul Sănătății către autoritățile administrației publice locale, cu modificările și completările ulterioare;
- Prevederile H.G. nr. 56/2009 pentru aprobarea Normelor metodologice de aplicare a Ordonanței de urgență a Guvernului nr. 162/2008 privind transferul ansamblului de atribuții și competențe exercitate de Ministerul Sănătății către autoritățile administrației publice locale, cu modificările și completările ulterioare;
- Prevederile OMS nr. 1500/2009 privind Regulamentul de organizare și funcționare a secțiilor și compartimentelor de anestezie și terapie intensivă din unitățile sanitare, cu modificările și completările ulterioare;
- Prevederile OMS nr. 1358/2014 privind înființarea rețelei de genetică medicală, cu modificările și completările ulterioare;
- Prevederile art. 129, alin.(2), (3) și (7) din OUG nr.57/2019 privind Codul Administrativ, cu modificările și completările ulterioare;
- Legea nr. 24/2000 privind normele de tehnică legislativă pentru elaborarea actelor normative, republicată, cu modificările și completările ulterioare.

În temeiul art. 139 și art. 196 alin. (1) lit. a) din O.U.G. nr. 57 din 3 iulie 2019 privind Codul Administrativ, cu modificările și completările ulterioare,

HOTĂRĂȘTE

Art.1. Se aprobă Organigrama și Statul de funcții ale Spitalului de Urgență Târgu Cărbunești pe anul 2021, conform anexei nr.1 și anexei nr.2, care fac parte integrantă din prezenta hotărâre.

Art.2. Primarul orașului, compartimentele de resort din cadrul Primăriei orașului Târgu Cărbunești și conducerea Spitalului de Urgență Târgu Cărbunești vor asigura ducerea la îndeplinire a prezentei hotărâri.

Prezenta hotărâre a fost adoptată în cadrul ședinței extraordinare din data 12.04.2021, la care au participat 15 consilieri locali din 15 consilieri în funcție, cu 14 voturi pentru și 1 vot împotriva.

PREȘEDINTELE DE ȘEDINȚĂ

Popescu Daniel



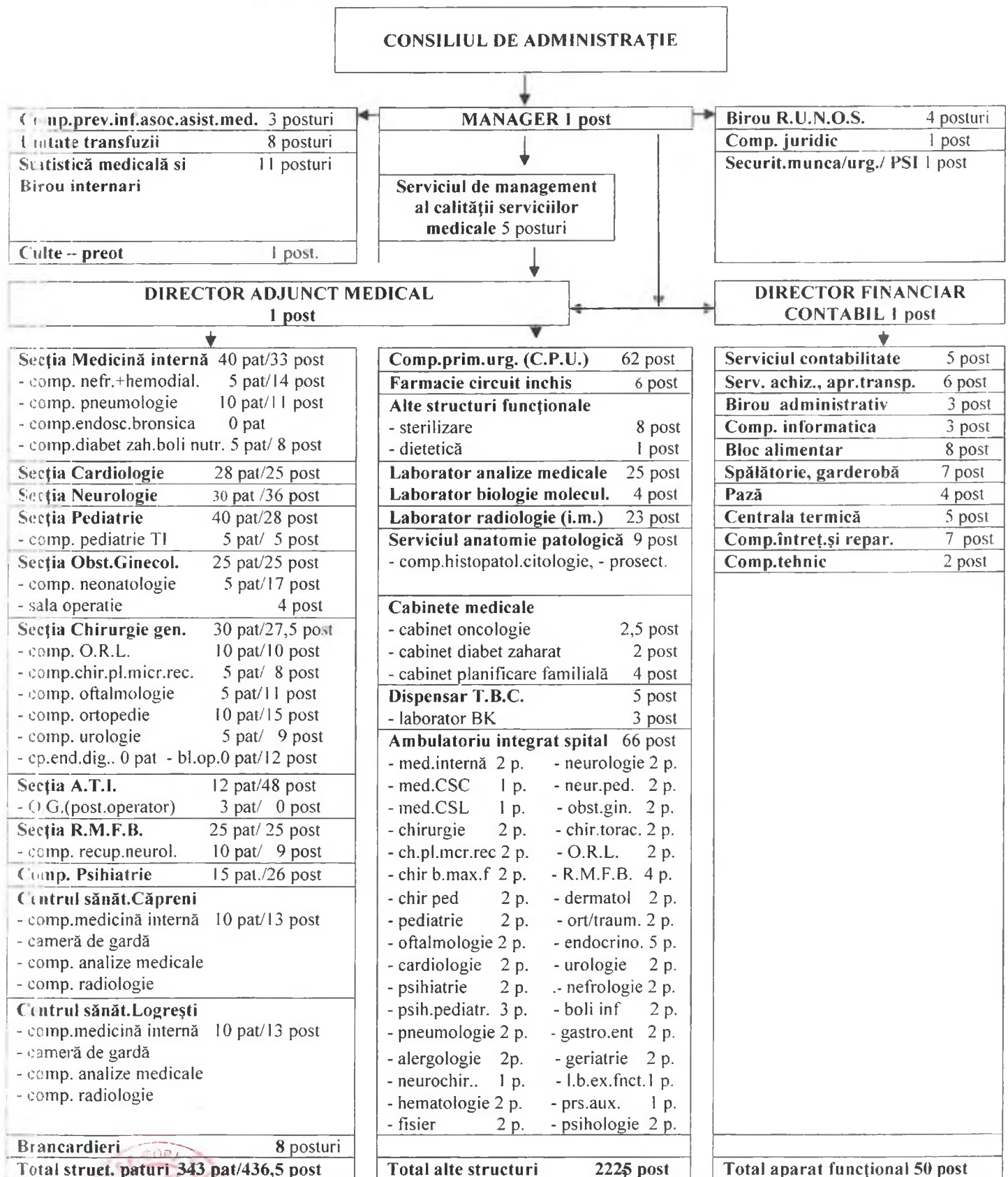
**Contrasemnează,
SECRETAR GENERAL
jr. Vlăduț Grigore-Alin**



**Târgu Cărbunești, 12 aprilie 2021
Nr. 37**

ORGANIGRAMĂ

343 paturi- 743 posturi - 577posturi spital
- 66 posturi ambulatoriu
- 97 posturi buget de stat
- 3 posturi conducere



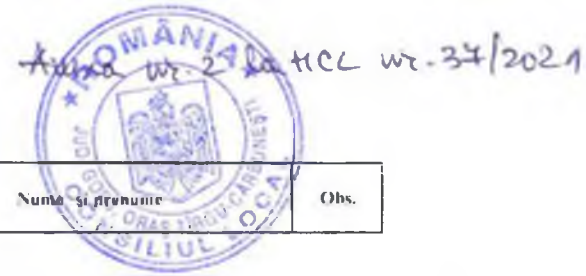
Dr. **Tarziu Constantin**
medic primar

DIRECTOR FINANCIAR CONTABIL.
Ec.I.A

Calinoiu Diana

BIROU R.U.N.O.S.
cons.jur. **Stoenescu Elena**

CONISLIER JURIDIC
Jr. **Mondoacă Anca**



STAT DE FUNCTII
valabil la data de 01.04.2021

Funcția,grad profesional treapta	Specialitatea	Niv. stud	Cuant. post	Gradatia	Salarul Lege 153/2017,		Numa si prenume	Obs.
----------------------------------	---------------	-----------	-------------	----------	------------------------	--	-----------------	------

COMITET DIRECTOR

MANAGER	Radio-diagn.	S	1	5	15,566	17,570		
DIR. ADJ.MED	Obst.-ginecol	S	1	4	15,186	16,325		
DIR.FIN.CONT	Ec.sp.I.A	S	1	5	5,040	7,563		

MEDICINĂ INTERNĂ
40 paturi

Comp. Pneumol.10 paturi
Comp. Nefrologie.5 paturi
Comp. Endoscopie bronsica - 0 paturi
Comp. diabet zaharat - 5 paturi
Statie Hemodializa

MEDICI

MED PRIMAR	Med interna	S	1	3	14,816			vacant
MED PRIMAR	Med interna	S	1	3	14,816			vacant
MED.SPEC. SEF S	Med interna	S	1	4	15,186	15,945		
MED.SPECIALIST	Med interna	S	1	2	11,175			
MED.SPECIALIST	Med interna	S	1	3	11,734			
MED.SPECIALIST	Med interna	S	1	2	11,175			
MED SPECIALIST	Med interna	S	1	2	11,175			
MED.REZ.AN.IV	Med interna	S	1	1	7,848			

CADRE MEDII

AS MED.PR.PL	Generalist	PL	1	5	4,869			
AS.MED.PL	Medicala	PL	1	1	4,150			
AS.MED.PR.PL.	Generalist	PL	1	4	4,869			
AS.MED.PL	Generalist	PL	1	4	4,750			
AS.MED.PR.PL	Medicala	PL	1	5	4,869			
AS.MED.PR.PL	Generalist	PL	1	4	4,750	6,223		
AS.MED.PR.PL	Generalist	PL	1	4	4,750			
AS.MED.PR.PL	Generalist	PL	1	5	4,869			
AS.MED.PR.PL	Generalist	PL	1	2	4,413			
AS.MED.PL	Generalist	PL	1	2	4,358			
AS.MED.PR.PL	Generalist	PL	1	5	4,869			vacant
AS.MED.PL	Generalist	PL	1	0	3,860			
AS.MED.PR.PL	Generalist	PL	1	4	4,750			
AS.MED.PR.PL	Generalist	PL	1	5	4,869			
AS.MED.PL	Generalist	PL	1	1	3,860			

PERSONAL AUXILIAR

INFIRMIERA		G	1	0	2,638			vacant
INFIRMIERA		G	1	1	2,836			
INFIRMIERA		G	1	0	2,638			
INFIRMIERA		G	1	2	2,977			
INFIRMIERA		G	1	5	3,284			
INFIRMIERA		G	1	5	3,284			vacant
INFIRMIERA		G	1	5	3,284			
INFIRMIERA		G	1	0	2,313			vacant
INGRIJITOARE		G	1	0	2,313			vacant

PNEUMOLOGIE.10 paturi

MEDICI

MED.SPECIALIST	Pneumologie	S	1	3	11,734			
MED.SPECIALIST	Pneumologie	S	1	2	11,175			

Funcția,grad profesional treapta	Specialitatea	Postul	Cuant. post	Gradatia	Salariu Lege 153/2017.				Obs.
----------------------------------	---------------	--------	-------------	----------	------------------------	--	--	--	------

PNEUMOLOGIE.10 paturi

CADRE MEDII

AS.MED.PR.PL	Generalist	PL	1	3	4,634				
AS.MED.PL	Generalist	PL	1	5	4,807				
AS.MED.PR.PL	Generalist	PL	1	3	4,576				
AS.MED.PR.PL	Generalist	PL	1	5	4,869				
AS.MED.PL	Generalist	PL	1	1	3,860				

PERSONAL AUXILIAR

INFIRMIERA		G	1	2	2,836				
INFIRMIERA		G	1	3	2,977				
INFIRMIERA		G	1	2	2,836				
INGRIJITOARE		G	1	0	2,313				vacant

NEFROLOGIE.5 paturi

MEDICI

MED.SPECIALIST	Nefrologie	S	1	2	11,175				vacant
MED.SPECIALIST	Nefrologie	S	1	2	11,175				vacant

CADRE MEDII

AS.MED.PL	Generalist	PL	1	2	4,358				
AS.MED.PL	Generalist	PL	1	2	4,358				
AS.MED.PL	Generalist	PL	1	1	4,150				
AS.MED.PR.PL	Generalist	PL	1	5	4,869				
AS.MED.DEB.PL	Generalist	PL	1	0	3,750				vacant

PERSONAL AUXILIAR

INFIRMIERA		G	1	2	2,977				
INFIRMIERA		G	1	2	2,977				
INFIRMIERA.DEB.		G	1	0	2,313				vacant

Diabet.5 paturi

MEDICI

MEDIC.SPECIALIST	Diabet	S	1	2	11,175				
MEDIC.SPECIALIST	Diabet	S	1						vacant
MEDIC.REZ. AN III	Diabet	S	1	0	6,700				

CADRE MEDII

AS.MED.PL	Generalist	PL	1	0	3,860				vacant
AS.MED.PL	Generalist	PL	1	0	3,860				vacant
AS.MED.PL	Generalist	PL	1	0	3,860				
AS.MED.DEB.PL	Generalist	PL	1	0	3,750				vacant
AS.MED.DEB.PL	Generalist	PL	1	0	3,750				vacant

IE HEMODIALIZĂ

MEDICI

MED.SPECIALIST	Nefrologie	S	1		11,175				vacant
----------------	------------	---	---	--	--------	--	--	--	--------

CADRE MEDII

AS.MED.PL	Generalist	PL	1	1	3,860				vacant
AS.MED.DEB.PL	Generalist	PL	1	1	3,750				vacant

PERSONAL AUXILIAR

INFIRMIERA		G	1		2,330				vacant
------------	--	---	---	--	-------	--	--	--	--------

Funcția, grad profesional	Specialitatea	Niv. stud.	Cuant. post	Gradati	Salariu 1 ianuarie 2017				Obs.
---------------------------	---------------	------------	-------------	---------	-------------------------------	--	--	--	------

CARDIOLOGIE.28 paturi
MEDICI

MED.PRIMAR.SEF S	Cardiologie	S	1	3	14,816	15,557			
MED.SPECIALIST	Cardiologie	S	1	2	11,175				
MED.SPECIALIST	Cardiologie	S	1	3	11,734				
MED.SPECIALIST	Cardiologie	S	1	3	11,734				susp.
MED.SPECIALIST	Cardiologie	S	1	2	11,175				
MED.SPECIALIST	Cardiologie	S	1	2	11,175				
MED.REZ.AN.IV	Cardiologie	S	1	1	7,838				
MED.REZ.AN.III	Cardiologie	S	1	0	6,700				
MED.REZ.AN.II	Cardiologie	S	1	0	6,100				

CADRE MEDII

AS.MED.PR.PL	Generalist	PL	1	3	4,634				
AS.MED.PR.PL	Generalist	PL	1	3	4,634				
AS.MED.PR.PL	Generalist	PL	1	4	4,750				
AS.MED.PR.PL.AS.S	Generalist	PL	1	5	4,869	6,223			
AS.MED.PR.PL	Generalist	PL	1	5	4,869				
AS.MED.PR.PL	Generalist	PL	1	4	4,634				
AS.MED.PR.PL	Generalist	PL	1	5	4,750				
AS.MED.PR.PL	Generalist	PL	1	4	4,750				
AS.MED.DEB.PL	Generalist	PL	1	0	3,860				
AS.MED.PR.PL	Generalist	PL	1	3	4,634				
AS.MED.PR	Generalist	S	1	5					vacant

PERSONAL AUXILIAR

INFIRMIERA	INFIRMIERA	G	1	2	2,836				
INFIRMIERA DEB	INFIRMIERA	G	1	3	2,977				
INFIRMIERA	INFIRMIERA	G	1	5	3,284				
INFIRMIERA	INFIRMIERA	G	1	3	3,126				
INFIRMIERA	INFIRMIERA	G	1	5	3,284				
INFIRMIERA	INFIRMIERA	G	1	5	3,284				
INFIRMIERA DEB	INFIRMIERA	G	1	2	2,977				
INFIRMIERA DEB	INFIRMIERA DEB	G	1	3	3,126				

NEUROLOGIE.30 paturi
MEDICI

MED.PRIMAR	Neurologie	S	1	4	14,816				
MED.PRIMAR	Neurologie	S	1	4	14,186				
MED.PRIMAR.SEF S	Neurologie	S	1	4	15,186	15,945			
MED.PRIMAR	Neurologie	S	1	3	14,110				
MED.SPECIALIST	Neurologie	S	1	2	11,175				

ALT PERSONAL CU STUDII SI PERIOARE

FIZIOKINETOT DEB	Kinetoter deb	S	1		2,450				vacant
------------------	---------------	---	---	--	-------	--	--	--	--------

CADRE MEDII

AS.MED.PR.PL	Generalist	PL	1	5	4,869				
AS.MED.PR.PL	Generalist	PL	1	3	4,634				
AS.MED.PR.S	Generalist	S	1	4	5,279				
AS.MED.PR.PL	Generalist	PL	1	4	4,750				
AS.MED.PL	Generalist	PL	1	0	3,860				
AS.MED.DEB.PL	Generalist	PL	1	0	3,860				
AS.MED.PR.PL	Generalist	PL	1	4	4,750				
AS.MED.PL	Generalist	PL	1	5	4,807				
AS.MED.PL	Generalist	PL	1	0	3,860				
AS.MED.PR.PL.AS.S	Generalist	PL	1	5	4,869	6,223			
AS.MED.PR.PL	Generalist	PL	1	5	4,869				
AS.MED.DEB.PL	Generalist	PL	1	2	3,860				
AS.MED.DEB.PL	Generalist	PL	1	5	3,860				
AS.MED.PL	Maseur	PL	1		3,750				vacant

Funcția,grad profesional treapta	Specialitatea	Niv. stud	Cuant. post	Gradatia	Salariu Lege 153/2017.				Obs.
----------------------------------	---------------	-----------	-------------	----------	------------------------	--	--	--	------

NEUROLOGIE.30 paturi

PERSONAL AUXILIAR

INFIRMIERA		G	1	3	3,126				
INFIRMIERA		G	1	3	3,126				
INFIRMIERA		G	1	1	2,836				
INFIRMIERA		G	1	3	3,126				
INFIRMIERA		G	1	5	3,284				
INFIRMIERA		G	1	4	3,204				
INFIRMIERA		G	1	5	3,284				
INFIRMIERA		G	1	3	3,126				
INFIRMIERA		G	1	5	3,284				
INFIRMIERA		G	1	4	3,132				

PSIHATRIE.15 paturi

MEDICI

MED PRIMAR	Psihiatrie	S	1	4	15,186	15,945			
MED PRIMAR	Psihiatrie	S	1	5	15,566				
MED.PRIMAR	Psihiatrie	S	1	4	15,566				
MED.SPECIALIST	Psihiatrie	S	1	3	11,734				
MED PRIMAR	Psihiatrie	S	1	4	15,566				
MED.SPECIALIST	Psihiatrie	S	1	4	12,027				

CADRE MEDII

AS.MED.PR.PL	Generalist	PL	1	5	4,869				
AS.MED.PR.PL	Generalist	PL	1	5	4,869	6,223			
AS.MED.PL	Generalist	PL	1	4	4,690				
AS.MED.PL	Generalist	PL	1	3	4,576				
AS.MED.PL	Generalist	PL	1	2	4,358				
AS.MED.PR.PL	Generalist	PL	1	5	4,869				
AS.MED.PR.PL	Generalist	PL	1	4	4,750				
AS.MED.PL	Generalist	PL	1	3	4,576				
AS.MED.PR.PL	Generalist	PL	1	4	4,750				
AS.MED.PL	Generalist	PL	1	3	4,576				
AS.MED.PR.PL	Generalist	PL	1	5	4,869				
AS.MED.PL	Generalist	PL	1	1	4,150				

PERSONAL AUXILIAR

INFIRMIERA		G	1	5	3,284				
INFIRMIERA		G	1	5	3,284				
INFIRMIERA		G	1	5	3,284				
INFIRMIERA		G	1	5	3,284				
INFIRMIERA		G	1	1	2,499				
INFIRMIERA		G	1	5	3,284				
INGRIJITOARE		G	1	4	2,825				
INGRIJITOARE		G	1	1	2,499				
INGRIJITOARE		G	1	1	2,350				vacant

R.M.F.B. 25 paturi

Comp. R.N. 10 paturi

MEDICI

MED PRIMAR SEF S	R.M.F.B.	S	1	4	15,186	15,945			
MED.PRIMAR	R.M.F.B.	S	1	3	14,816				
MED PRIMAR	R.M.F.B.	S	1	3	14,816				

Funcția, grad profesional treapta	Specialitatea	Niv. stud	Cuant. post	Gradatia	Salariu Lege 153/2017.				
-----------------------------------	---------------	-----------	-------------	----------	------------------------	--	--	--	--

R.M.F.B. 25 paturi
Comp. R.N. 10 paturi

ALI PERSONAL CU STUDII SUPERIOARE

FIZIOKINETOT SPEC	Fizio-kinet	S	1	2	6,220				
FIZIOKINETOT SPEC	Fizio-kinet	S	1	1	5,642				
KINETOTERAPEUT	Fizio-kinet	S	1	2	5,865				

CADRE MEDII

AS.MED.PL	Generalist	PL	1	4	4,690				
AS.MED.PR.PL AS S	Generalist	PL	1	5	4,869	6,223			
AS.MED.PR.PL	Generalist	PL	1	5	4,869				
AS.MED.DEB.PL	Generalist	PL	1	5	3,860				
AS.MED.PL	Generalist	PL	1	5	4,807				
AS.MED.PR.PL	Generalist	PL	1	5	4,869				
AS.MED.PR.PL	Maseor	PL	1	5	4,869				maseor
AS.MED.PR.PL	Generalist	PL	1	5	4,869				
AS.MED.PR.PL	Generalist	PL	1	3	4,634				
AS.MED.DEB.PL	Generalist	PL	1	3	4,576				
AS.MED.DEB.PL	Generalist	PL	1	0	3,860				

PERSONAL AUXILIAR

INFIRMIERA		G	1	1	2,836				
INFIRMIERA		G	1	4	3,204				
INFIRMIERA		G	1	3	3,126				
INFIRMIERA		G	1	0	2,330				vacant
INGRIJITOARE		G	1	3	2,861				susp
INGRIJITOARE		G	1		1,360				vacant
INGRIJITOARE		G	1		1,360				vacant

R.N. 10 paturi

ALT PERSONAL CU STUDII SUPERIOARE

FIZIO-KINET.SPEC	Fizio-kinetoterap.	S	1	3	5,151				
------------------	--------------------	---	---	---	-------	--	--	--	--

CADRE MEDII

AS.MED.PR.PL	Generalist	PL	1	5	4,869				
AS.MED.PL	Generalist	PL	1		3,750				
AS.MED.DEB.PL.	Generalist	PL	1		3,750				
AS.MED.PL	Maseur	PL	1		3,750				vacant

PERSONAL AUXILIAR

INFIRMIERA		G	1	5	3,284				
INFIRMIERA		G	1	3	3,126				
INFIRMIERA		G	1		2,330				vacant
INGRIJITOARE		G	1		2,330				vacant

PEDIATRIE.40 paturi

Comp. TI. 5 paturi

MEDICI

MED.PRIMAR	Pediatric	S	1	5	15,566				vacant
MED.PRIMAR	Pediatric	S	1	5	15,566				
MED.SPECIALIST SEF S	Pediatric	S	1	2	11,175	16,344			
MED.REZ.III	Pediatric	S	1	0	6,700				
MED.REZ.II	Pediatric	S	1	0	6,700				

Func. grad profesional creapta	Specialitatea	Niv. stud.	Cuant. post	Specialista	Salariu Lege 153/2017				Obs.
--------------------------------	---------------	------------	-------------	-------------	-----------------------	--	--	--	------

PEDIATRIE.40 paturi
Comp. TI . 5 paturi

CADRE MEDII

AS.MED.PR.PL	Generalist	PL	1	5	4,869				
AS.MED.PR.PL	Generalist	PL	1	5	4,869				
AS.MED.PR.PL	Generalist	PL	1	5	4,869				
AS.MED.PL	Generalist	PL	1	3	4,576				
AS.MED.PR.PL	Generalist	PL	1	4	4,750				
AS.MED.DEB.PL	Generalist	PL	1	1	4,031				
AS.MED.PR.PL.AS.S	Generalist	PL	1	5	4,869	6,223			
AS.MED.PL	Generalist	PL	1	0	3,860				
AS.MED.PR.PL	Pediatric	PL	1	5	4,869				
AS.MED.PR.PL	Pediatric	PL	1	4	4,750				
AS.MED.PL	Generalist	PL	1	0	3,860				
AS.MED.DEB.PL	Generalist	PL	1	0	3,750				vacant

PERSONAL AUXILIAR

INFIRMIERA		G	1	1	2,379				
INFIRMIERA		G	1	5	3,284				
INFIRMIERA		G	1	0	2,638				
INFIRMIERA		G	1	0	2,325				vacant
INFIRMIERA		G	1	0	2,325				vacant
INFIRMIERA		G	1	1	2,836				
INFIRMIERA DEB		G	1	2	2,977				
INFIRMIERA DEB		G	1	0	2,638				
INGRIJITOARE		G	1	0	2,325				

TERAPIE INTENSIVA.5 paturi

CADRE MEDII

AS.MED.PL	Generalist	PL	1		2,058				vacant
AS.MED.PL	Generalist	PL	1		2,058				vacant
AS.MED.PL	Generalist	PL	1		2,058				vacant

PERSONAL AUXILIAR

INFIRMIERA DEB		G	1		1,365				vacant
INFIRMIERA DEB		G	1		1,365				vacant

CHIURGIE GEN.:

Comp. O.R.L.
Comp. Oftalmologie
Comp. endoscopie digestiva 0 paturi

Comp. Ortopedie
Comp. Urologie
Comp. chir.plast.mich.rep.

MEDICI

MED.PRIMAR	Chirurgie	S	1	4	15,186				
MED.SPECIALIST	Chirurgie	S	1	2	11,175				
MED.PR.SEF.SEC.I	Chirurgie	S	1	5	16,344				
MED.PR.ENDOSC.	Chirurgie	S	0.5		5,479				vacant
MED.SPECIALIST	Chirurgie	S	1	3	11,734				
MED.PRIMAR	Chirurgie	S	1	3	14,816				
MED.SPECIALIST	Chirurgie	S	1	3	11,734				

Funcția, grad profesional treapta	Specialitatea	Niv. stud	Cuant. post	Gradatia	Salariu Lege 153/2017.					
-----------------------------------	---------------	-----------	-------------	----------	------------------------	--	--	--	--	--

CADRE MEDII

S.MED.PL	Generalist	PL	1	1	4,150					
S.MED.PR.PL	Medicala	PL	1	5	4,869					
S.MED.PR.PL	Generalist	PL	1	5	4,869					
S.MED.PR.PL	Generalist	PL	1	5	4,869					
S.MED.PL	Generalist	PL	1	3	4,576					
S.MED.PR.PL	Generalist	PL	1	2	2,212					
S.MED.PR.PL	Generalist	PL	1	5	4,869	6,223				
S.MED.PR.PL	Generalist	PL	1	3	4,576					
S.MED.PR.PL	Generalist	PL	1	1	3,860					
S.MED.PR.PL	Generalist	PL	1	1	3,860					vacant
S.MED.DEB.PL	Generalist	PL	1	1	3,860					vacant

PERSONAL AUXILIAR

INFIRMIERA		G	1	5	3,284					
INFIRMIERA		G	1	3	3,126					
INFIRMIERA		G	1	3	3,126					
INFIRMIERA DEB		G	1	3	3,056					
INFIRMIERA		G	1	3	2,586					vacant
INFIRMIERA		G	1	3	3,056					
NGRIJITOARE		G	1		1,360					vacant
NGRIJITOARE		G	1		1,360					vacant

BLOC OPERATOR

CADRE MEDII

AS.MED.PR.PL	Generalist	PL	1	5	4,869					
AS.MED.PR.S	Generalist	PL	1	3	5,150					
AS.MED.PL	Generalist	PL	1	1	4,150					
AS.MED.S	Generalist	PL	1	2	4,905					
AS.MED.PR.PL	Generalist	PL	1	4	4,750					
AS.MED.PR.PL	Generalist	PL	1	3	4,634					
AS.MED.PR.PL	Generalist	PL	1	3	4,634					

PERSONAL AUXILIAR

INFIRMIERA		G	1	4	3,204					
INFIRMIERA		G	1	5	3,284					
INFIRMIERA		G	1	3	3,126					
INFIRMIERA		G	1	2	2,977					
INFIRMIERA		G	1	53	3,126					

D.R.L.

MEDICI

MED.PRIMAR	O.R.L.	S	1	5	7,783					
MED.SPECIALIST	O.R.L.	S	1	1	7,848					
MED.REZ.V	O.R.L.	S	1		3,058					vacant

CADRE MEDII

AS.MED.PR.PL	Generalist	PL	1	5	4,869					
AS.MED.PR.PL	Generalist	PL	1	4	4,750					
AS.MED.PR.PL	Generalist	PL	1	4	4,750					
AS.MED.PR.PL	Generalist	PL	1	5	4,869					
AS.MED.PR.S	Generalist	S	1	3	5,150					

Functia,grad profesional treapta	Specialitatea	Niv. stud	Cuant. post	Gradatia	Salario Lege 153/2017.					Obs.
----------------------------------	---------------	-----------	-------------	----------	------------------------	--	--	--	--	------

D.R.1..

PERSONAL AUXILIAR

INFIRMIERA		G	1		1,365					vacant
INFIRMIERA		G	1		1,365					vacant

OFTALMOLOGIE

MEDICI

MED.PRIMAR	Oftalmologie	S	1		4,200					
MED.SPECIALIST	Oftalmologie	S	1		2,361					
MED.SPECIALIST		S	1							vacant

CADRE MEDII

AS.MED.PR.PL	Generalist	PL	1	1	3,869					vacant
AS.MED.PL	Generalist	PL	1	2	4,358					
AS.MED.PL	Generalist	PL	1	1	3,869					vacant
AS.MED.DEB.PL	Generalist	PL	1	0	3,750					vacant
AS.MED.DEB.PL	Generalist	PL	1	0	3,750					vacant

PERSONAL AUXILIAR

INFIRMIERA DEB		G	1	1	2,638					vacant
INFIRMIERA DEB		G	1	1	2,638					vacant
INFIRMIERA DEB		G	1	1	2,638					vacant

ORTOP. -TRAI MAT.

MEDICI

MED.PRIMAR	Ortopedie	S	1	4	15,186					
MED.SPECIALIST	Ortopedie	S	1	3	11,734					
MED.SPECIALIST	Ortopedie	S	1	3	11,734					
MED.SPECIALIST	Ortopedie	S	1	3	11,734					
MED.SPECIALIST	Ortopedie	S	1	4	12,027					

CADRE MEDII

AS.MED.PR.PL	Generalist	PL	1	2	4,413					
AS.MED.PL	Generalist	PL	1	2	4,358					
AS.MED.PR.PL	Generalist	PL	1	2	4,413					
AS.MED.PR.PL	Generalist	PL	1	5	4,869					
AS.MED.DEB.PL	Generalist	PL	1	0	3,750					vacant
AS.MED.DEB.PL	Generalist	PL	1	0	3,750					vacant

PERSONAL AUXILIAR

INFIRMIERA		G	1	2	2,977					
INFIRMIERA DEB		G	1	0	2,313					vacant
INFIRMIERA DEB		G	1	0	2,313					vacant
INGRIJITOARE		G	1	0	2,313					vacant

UROLOGIE

MEDICI

MED.PRIMAR	Urologie	S	1	4	15,186					
MED.SPECIALIST	Urologie	S	1	2	11,175					
MED.SPECIALIST	Urologie	S	1	2	11,175					

Specialitatea profesionala / Gradul profesional	Specialitatea	Niv. stud.	Cuant. post	Gradatia	Salariu Lege 153/2017				Obs.
---	---------------	------------	-------------	----------	-----------------------	--	--	--	------

PROLOGIE

CADRE MEDII

AS.MED.PR.PL	Generalist	PL	1	5	4,869				
AS.MED.PL	Generalist	PL	1	1	3,869				vacant
AS.MED.PL	Generalist	PL	1	3	4,358				
AS.MED.DEB.PL	Generalist	PL	1	0	3,750				vacant

PERSONAL AUXILIAR

INFIRMIERA DEB		G	1	0	2,313				vacant
INGRIJITOARE		G	1	0	2,313				vacant

CHIR.PL.MICR.REC.

MEDICI

MED.PRIMAR	Chir.pl.micro.rep.	S	1	3	14,110				
------------	--------------------	---	---	---	--------	--	--	--	--

CADRE MEDII

AS.MED.DEB.PL	Generalist	PL	1	0	3,750				vacant
AS.MED.DEB.PL	Generalist	PL	1	0	3,750				vacant
AS.MED.PL	Generalist	PL	1	4	4,807				
AS.MED.PL	Generalist	PL	1	1	3,860				
AS.MED.PL	Generalist	PL	1	1	3,860				vacant

PERSONAL AUXILIAR

INFIRMIERA DEB		G	1		2,638				vacant
INGRIJITOARE		G	1		2,330				vacant

STERILIZARE - SECTIA CHIRURGIE

CADRE MEDII

AS.MED.PL	Generalist	PL	1	4	4,690				
AS.MED.PL	Generalist	PL	1	1	4,150				
AS.MED.DEB.PL	Generalist	PL	1	4	1,628				
AS.MED.DEB.PL	Generalist	PL	1	0	3,750				

OBST. - GINECOLOGIE 25 paturi

NEONATOLOGIE 5 paturi

MEDICI

MED.PRIMAR	Obst.-ginec	S	1	5	15,566				
MED.PRIMAR	Obst.-ginec	S	1	4	15,186	16,325			rez.
MED.PRIMAR.SEF.S	Obst.-ginec	S	1	5	15,566	16,344			
MED.PRIMAR	Obst.-ginec	S	1	4	15,186				susp
MED.SPECIALIST	Obst.-ginec	S		2	11,175				
MED.PRIMAR	Obst.-ginec	S	1	3	14,186				
MED.PRIMAR	Obst.-ginec	S	1	4	7,593				
MED.REZ.AN.IV	Obst.-ginec	S	1	1	7,848				

CADRE MEDII

AS.MED.S	Generalist	PL	1	0	4,173				
AS.MED.PR.S	Obst.-ginec	S	1	3	5,150				
AS.MED.S	Obst.-ginec	S	1	0	4,173				
AS.MED.PR.PL	Obst.-ginec	PL	1	4	4,750				
AS.MED.PR.PL	Obst.-ginec	PL	1	5	4,869				
AS.MED.PR.PL.AS.S	Obst.-ginec	PL	1	5	4,869	6,223			
AS.MED.PR.S	Generalist	S	1	4	5,279				
AS.MED.PR.S	Obst.-ginec	S	1	3	4,905				
AS.MED.PR.PL	Generalist	PL	1	3	4,634				

Funcția/grad profesional treapta	Specialitatea	Niv. stud.	Cuant. post	Gradatia	Salariu lege 153/2017					Obs.
----------------------------------	---------------	------------	-------------	----------	-----------------------	--	--	--	--	------

OBST. - GINECOLOGIE 25 paturi
NEONATOLOGIE 5 paturi

PERSONAL AUXILIAR

INFIRMIERA DEB		G	1	2	2,977					
INFIRMIERA		G	1	5	3,284					
INFIRMIERA		G	1	5	3,284					
INFIRMIERA		G	1	5	3,284					
INFIRMIERA DEB		G	1	0	2,313					vacant
INFIRMIERA		G	1	5	3,284					
INFIRMIERA		G	1	5	3,284					
INGRIJITOARE		G	1	0	2,313					vacant

DE OPERATIE (O.G.)

CADRE MEDII

AS.MED.PR.S	Generalist	PL	1	5	5,411					
AS.MED.PR.PL	Generalist	PL	1	2	3,860					vacant

PERSONAL AUXILIAR

INFIRMIERA DEB		G	1		1,365					vacant
INFIRMIERA DEB		G	1		1,365					vacant

IZARE (O.G.)

CADRE MEDII

AS.MED.PR.PL	Generalist	PL	1	3	4,634					
AS.MED.PR.PL	Generalist	PL	1	5	4,869					
AS.MED.PL	Generalist	PL	1	4	4,690					
AS.MED.PL	Generalist	PL	1	5	4,807					

NEONATOLOGIE

MEDICI

MED.PRIMAR	Neonatul.	S	1	3	14,816					
MED.REZ AN.IV	Neonatul.	S	1	1	7,848					
MED.REZ AN.II	Neonatul.	S	1	0	6,100					

CADRE MEDII

AS.MED.PR.PL	Generalist	PL	1	5	4,869					
AS.MED.PR.PL	Pediatrie	PL	1	5	4,869					
AS.MED.PR.PL	Generalist	PL	1	5	4,869					
AS.MED.PR.PL	Pediatrie	PL	1	5	4,869					
AS.MED.PR.PL	Generalist	PL	1	5	4,869					
AS.MED.PL	Generalist	PL	1		2,563					vacant
AS.MED.PL	Generalist	PL	1		2,058					vacant
AS.MED.PL	Generalist	PL	1		2,058					vacant

rt. NEONATOLOGIE

5 paturi

PERSONAL AUXILIAR

INFIRMIERA		G	1	5	3,284					
INFIRMIERA		G	1	3	3,126					
INFIRMIERA		G	1	3	3,126					
INFIRMIERA DEB		G	1		1,365					vacant
INGRIJITOARE		G	1		1,360					vacant

Funcția,grad profesional treapta	Specialitatea	Niv. stud	Cuant. post	Gradatia	Salariu Legi				Obs.
.T.I.									
MEDICI									
MED.PRIMAR	A.T.I.	S	1	5	16,608				
MED.SPECIALIST	A.T.I.	S	1	4	12,832				
MED.SPEC.SEF.S	A.T.I.	S	1	3	12,519	13,145			
MED.SPECIALIST	A.T.I.	S	1	3	12,519				
MED.REZ.AN.IV	A.T.I.	S	1	1	2,471				
MED.REZ.AN.II	A.T.I.	S	1	0	4,433				vacant
MED.REZ.AN.II	A.T.I.	S	1	0	6,100				
ALT PERSONAL CU STUDII SUPERIOARE									
KINETOTERAPEUT	Kinetoter.	S	1	0	5,267				
PSIHOLOG	Psihologie	S	1		3,301				
COMP. TEHNIC									
INGINER II		S	1		1,827				vacant
REG.MED		M	1	3	3,055				
REG.MED		M	1	0	3,017				
ADRF MEDII									
AS.MED.PL	Generalist	PL	1	3	4,742				
AS.MED.PL	Generalist	PL	1	3	4,742				
AS.MED.PR.PL	Generalist	PL	1	5	4,869	6,639			
AS.MED.PR.PL	Generalist	PL	1	5	5,181				
AS.MED.PL	Generalist	PL	1	4	4,861				
AS.MED.PR.S	Generalist	S	1	2	5,495				susp
AS.MED.DEB.PL	Generalist	S	1	0	4,215				
AS.MED.PL	Generalist	PL	1	4	4,861				
AS.MED.PL	Generalist	PL	1	2	4,516				susp
AS.MED.DEB.PL	Generalist	PL	1	1	3,948				
AS.MED.DEB.S	Generalist	S	1	5	4,996				
AS.MED.PR.PL	Generalist	PL	1	3	4,932				
AS.MED.PR.PL	Generalist	PL	1	4	5,055				
AS.MED.PL	Generalist	PL	1	2	4,516				
AS.MED.PL	Generalist	PL	1	3	4,742				
AS.MED.DEB.S	Generalist	S	1	5	4,246				
AS.MED.PL	Generalist	PL	1	1	4,001				
AS.MED.DEB.PL	Generalist	PL	1	3	4,679				
AS.MED.DEB.PL	Generalist	PL	1	1	3,948				vacant
AS.MED.DEB.PL	Generalist	PL	1	1	3,948				vacant
AS.MED.DEB.PL	Generalist	PL	1	1	3,948				vacant
PERSONAL AUXILIAR I									
NFIRMIERA		G	1	5	3,403				
NFIRMIERA		G	1	3	3,126				
NFIRMIERA		G	1	5	3,403				
NFIRMIERA DEB		G	1	3	3,126				vacant
NFIRMIERA		G	1	3	3,126				
NFIRMIERA		G	1	5	3,403				
NFIRMIERA DEB		G	1	5	3,403				
NFIRMIERA DEB		G	1	5	3,403				
NFIRMIERA		G	1	4	3,320				
NFIRMIERA DEB		G	1	3	3,126				
NFIRMIERA DEB		G	1	0	2,313				vacant
PERSONAL AUXILIAR II									
BRANCARDIER		G	1	1	2,595				
BRANCARDIER		G	1	2	2,724				
BRANCARDIER		G	1	1	2,595				
BRANCARDIER		G	1	2	2,724				
BRANCARDIER		G	1	0	2,414				
BRANCARDIER		G	1	1	2,595				

Funcția,grad profesional treapta	Specialitatea	Niv. stud	Post. numr	Gradatia	Salariu Lege				Obs.
Compartiment primiri urgente									
MEDICI									
MED.PRIMAR	Med.urgenta	S	1	5	16,608				1
MED.PRIMAR	Med.gen.	S	1	5	16,608				1
MED.SPECIALIST	Med.urgenta	S	1	3	12,519				1
MED.SPECIALIST	Med.urgenta	S	1	2	5,962				0.5
MED.SP.SEF CPU	Med.urgenta	S	1	2	11,923				1
MED.SPECIALIST	Med.urgenta	S	1	3	12,519	13,145			1
MED.SPECIALIST	Med.urgenta	S	1	5	11,923				1
MED.SPECIALIST	Med.urgenta	S	1	2	12,519				1
MED.PRIMAR	Med.gen.	S	1	5	16,608				1
MED.REZ.AN.V	Med.urgenta	S	1	3	12,519				1
MED.REZ.AN.II	Med.urgenta	S	1	0	6,100				1
CADRE MEDII									
AS.MED.PR.PL.AS.SEF	Generalist	S	1	4	5,055	6,639			1
AS.MED.PR.PL	Generalist	PL	1	5	5,181				1
AS.M.PR.PL	Pediatric	PL	1	5	5,181				1
AS.MED.PL	Generalist	PL	1	2	4,516				1
AS.MED.PR.PL	Generalist	PL	1	4	5,055				1
AS.MED.PR.PL	Generalist	PL	1	5	5,181				1
AS.MED.PR.PL	Generalist	PL	1	2	4,697				1
AS.MED.DEB.PL	Generalist	PL	1	3	4,742				1
AS.MED.PR.PL	Generalist	PL	1	5	5,181				1
AS.MED.PR.S	Generalist	S	1	5	5,773				1
AS.MED.PR.PL	Generalist	PL	1	5	5,181				1
AS.MED.PL	Generalist	PL	1	1	4,301				1
AS.MED.PR.PL	Generalist	PL	1	3	4,932				1
AS.MED.PR.PL	Generalist	PL	1	4	5,055				1
AS.MED.PR.PL	Generalist	PL	1	4	5,055				1
AS.MED.PL	Generalist	PL	1	2	4,516				1
AS.MED.PL	Generalist	PL	1	2	4,516				1
AS.MED.PL	Generalist	PL	1	4	5,055				1
AS.MED.S	Generalist	S	1	2	5,026				1
AS.MED.PR.PL	Generalist	PL	1	2	5,055				1
AS.MED.PL	Generalist	PL	1	0	4,001				1
AS.MED.PL	Generalist	PL	1	3	4,742				1
AS.MED.PL	Generalist	PL	1	3	4,001				1
REG.MED.		M	1	5	3,756				1
REG.MED		M	1	3	3,576				1
REG.MED		M	1	5	3,756				1
REG.MED		M	1	4	3,665				1
REG.MED		M	1	2	3,405				1
REG.MED		M	1	3	3,576				1
REG.MED.		M	1	4	3,665				1
PERSONAL AUXILIAR									
NFIRMIERA		G	1	4	3,320				1
NFIRMIERA		G	1	2	3,084				1
NGRIJITOR CURATENIE		G	1	4	2,932				1
NFIRMIERA		G	1	5	3,403				1
NFIRMIERA		G	1	5	3,403				1
NFIRMIERA		G	1	5	3,403				1
NFIRMIERA		G	1	3	3,239				1
NFIRMIERA		G	1	4	3,320				1
NFIRMIERA		G	1	2	3,084				1
NFIRMIERA		G	1	2	3,084				1
NFIRMIERA		G	1	5	3,403				1
NFIRMIERA		G	1	3	3,239				1

Funcția,grad profesional treapta	Specialitatea	Niv. stud.	Cuant. post	Gradatia	Salariu Legi 2015				Obs.
----------------------------------	---------------	------------	-------------	----------	-------------------	--	--	--	------

Compartiment primiri urgente

PERSONAL AUXILIAR

INFIRMIERA		G	1	2	3,084				
INFIRMIERA		G	1	3	3,239				
INFIRMIERA		G	1	3	3,239				
INFIRMIERA		G	1	3	3,239				
INFIRMIERA DEB		G	1	1	2,937				
INFIRMIERA DEB		G	1	0	2,733				
BRANCARDIER		G	1	1	2,595				
BRANCARDIER		G	1	5	3,005				
BRANCARDIER		G	1	5	3,005				
BRANCARDIER		G	1	0	2,414				
BRANCARDIER		G	1	1	2,595				
BRANCARDIER		G	1	5	3,005				

sănătate CĂPRENI 10 paturi

MEDICI

MED.PRIMAR	Med.interna	S	1	3	6,161				
MED.REZ AN.IV	Med.interna	S	1	1	7,848				

CADRE MEDII

SORA.MED.PR.M	Medicala	M	1	5	4,869				vacant
AS.MED.PR.PL	Generalist	PL	1	5	4,869				
AS.MED.PR.PL	Generalist	PL	1	5	4,869				
AS.MED.PR.PL	Generalist	PL	1	5	4,869				
AS.MED.PL	Generalist	PL	1	0	3,860				
AS.MED.DEB.PL	Generalist	PL	1	0	3,750				vacant

MUNCITORI

MUNC.I (BUCATAR)		G	1	5	3,572				
------------------	--	---	---	---	-------	--	--	--	--

PERSONAL AUXILIAR

INFIRMIERA		G	1	3	3,126				
INFIRMIERA DEB		G	1		1,365				vacant
INGRIJITOARE		G	1		1,360				vacant
SPALATOREASA		G	1	4	2,825				

sănătate LOGRESTI 10 paturi

MEDICI

MED.PRIMAR.SEF.CS	Med.interna	S	1	3	11,743	15,556			
MED.REZ AN.IV	Med.interna	S	1	1	7,848				

CADRE MEDII

AS.MED.PR.PL	Generalist	PL	1	5	4,869				
AS.MED.PR.PL	Generalist	PL	1	5	4,869				
AS.MED.DEB.PL	Pediatric	PL	1		2,845				vacant
AS.MED.PR.PL	Generalist	PL	1	4	4,750				
AS.MED.PR.PL	Generalist	PL	1	5	4,869				
AS.MED.DEB.PL	Generalist	PL	1	0	3,750				

PERSONAL AUXILIAR

INFIRMIERA		G	1	1	2,836				
INFIRMIERA DEB		G	1		2,350				vacant
INGRIJITOARE		G	1		2,350				vacant

MUNCITORI

MUNC.IV (FOCHIST)		G	1	5	3,256				
MUNC.II (BUCAT)		G	1	5	3,462				

PREOT I		S	1	4	4,576				
---------	--	---	---	---	-------	--	--	--	--

Funcția,grad profesional treapta	Specialitatea	Niv. stud	Cuant. post	Gradatia	Salariu	Cost	Cost	Cost	Obs.
----------------------------------	---------------	-----------	-------------	----------	---------	------	------	------	------

CADRE CU CIRCUIT INCHIS

ALT PERSONAL CU STUDII SUPERIOARE

FARMACIST.FM.SEF	Farmacie	S	1	5	7,427				
FARMACIST	Farmacie	S	1	2	6,576				

CADRE MEDII

AS.MED.PR.S	Farmacie	S	1	4	5,279				
AS.MED.PR.S	Farmacie	S	1	3	5,150				
AS.MED.PR.S	Farmacie	S	1	4	5,279				
AS.MED.DEB.PL	Generalist	PL	1	4	4,690				

TE DE TRANSFUZII

MEDICI

MED.SPECIALIST	A. F. I	S	1	2	6,260				
----------------	---------	---	---	---	-------	--	--	--	--

0.5

CADRE MEDII

AS.MED.PL	Generalist	PL	1	1	4,150				vacant
AS.MED.DEB.PL	Generalist	PL	1	0	3,860				
AS.MED.PL	Generalist	PL	1	1	4,150				
AS.MED.PR.PL	Generalist	PL	1	5	4,869				
AS.MED.PL	Generalist	PL	1	4	4,690				
AS.MED.PL	Generalist	PL	1	0	3,860				
AS.MED.PL	Generalist	PL	1	2	4,358				
AS.MED.DEB.PL	Generalist	PL	1	1	4,150				

RATOR DE ANALIZE MEDICALE

MEDICI

MED.PRIMAR-M.SEF	Laborator	S	1	5	15,566	16,344			
MED.PRIMAR	Laborator	S	1	5	15,566				
MED.SPECIALIST	Laborator	S	1						vacant

ALT PERSONAL CU STUDII SUPERIOARE

CHIMIST PR	Chimist	S	1	5	7,573				
CHIMIST SPEC	Chimist	S	1	4	5,958				
BIOLOG SPEC	Biolog	S	1	3	6,346				
BIOLOG PR	Biolog	S	1	5	7,573				
BIOLOG DEB	Biolog	S	1	0	4,543				
CHIMIST DEB	Chimist	S	1	1	4,884				

CADRE MEDII

AS.MED.PL	Generalist	PL	1	3	4,634				
AS.MED.PR.PL	Laborator	PL	1	5	4,869				
AS.MED.PR.PL	Generalist	PL	1	5	2,845				
AS.MED.S	Generalist	S	1	2	2,406				
AS.MED.PL	Generalist	PL	1	4	2,500				
AS.MED.S	Laborator	S	1	1	2,132				
AS.MED.PR.PL.AS.S	Laborator	PL	1	5	4,869	6,223			
AS.MED.PR.PL	Laborator	PL	1	5	4,869				
AS.MED.PR.PL	Generalist	PL	1	4	4,750				
AS.MED.PR.PL	Laborator	PL	1	5	4,869				
AS.MED.PL	Laborator	PL	1	0	3,750				
AS.MED.PL	Generalist	PL	1	0	3,750				vacant

PERSONAL AUXILIAR

INFIRMIERA		G	1	0	1,467				
INFIRMIERA		G	1	1	1,467				

Funcția, grad profesional treapta	Specialitatea	Nr. studii	Cuant. post	Gradatia	Salariu Lege 153/2017				Obs.
-----------------------------------	---------------	------------	-------------	----------	-----------------------	--	--	--	------

PRATOR DE GENETICA MOLECULARA
MEDICI

MED.SPECIALIST	Genetica molec.	S	1	2	11,175				vacant
----------------	-----------------	---	---	---	--------	--	--	--	--------

ALT PERSONAL CU STUDII SUPERIOARE

BIOLOG DEB	Biolog	S	1	0	4,543				vacant
------------	--------	---	---	---	-------	--	--	--	--------

CHIMIST DEB	Chimist	S	1	1	4,884				vacant
-------------	---------	---	---	---	-------	--	--	--	--------

CADRE MEDII

AS.MED.PL	laborator	PL	1	0	3,750				vacant
-----------	-----------	----	---	---	-------	--	--	--	--------

PRATOR RADIOLOGIE SI IMAGISTICA MEDICALA
MEDICI

MED.PRIMAR	Radio-diagn	S	1	3	14,816				
------------	-------------	---	---	---	--------	--	--	--	--

MED.PRIMAR	Radio-diagn	S	1	5	15,566				
------------	-------------	---	---	---	--------	--	--	--	--

MED.PRIMAR	Radio-diagn	S	1	5	15,566	17,570			rez.
------------	-------------	---	---	---	--------	--------	--	--	------

MED.PRIMAR SEF L	Radio-diagn	S	1	5	15,566				
------------------	-------------	---	---	---	--------	--	--	--	--

MED.SPECIALIST	Radio-diagn	S	1	2	11,175				
----------------	-------------	---	---	---	--------	--	--	--	--

ALT PERSONAL CU STUDII SUPERIOARE

FIZICIAN SPEC	Radio-diagn	S	1	4	4,717				
---------------	-------------	---	---	---	-------	--	--	--	--

CADRE MEDII

AS.MED.PL	Rad-diagn	PL	1	5	4,807				
-----------	-----------	----	---	---	-------	--	--	--	--

AS.MED.PR.PL	Rad-diagn	PL	1	5	4,869				
--------------	-----------	----	---	---	-------	--	--	--	--

AS.MED.PR.PL	Rad-diagn	PL	1	5	4,869				
--------------	-----------	----	---	---	-------	--	--	--	--

AS.MED.S	Rad-diagn	PL	1	3	4,576				
----------	-----------	----	---	---	-------	--	--	--	--

AS.MED.PR.PL.AS.S	Rad-diagn	PL	1	5	4,869	6,223			
-------------------	-----------	----	---	---	-------	-------	--	--	--

AS.MED.S	Rad-diagn	S	1	1	4,486				
----------	-----------	---	---	---	-------	--	--	--	--

AS.MED.PR.PL	Rad-diagn	PL	1	5	4,869				
--------------	-----------	----	---	---	-------	--	--	--	--

AS.MED.PR.PL	Rad-diagn	PL	1	5	4,869				
--------------	-----------	----	---	---	-------	--	--	--	--

AS.MED.PR.PL	Rad-diagn	PL	1	5	4,869				
--------------	-----------	----	---	---	-------	--	--	--	--

AS.MED.PR.PL	Generalist	PL	1	5	4,869				CS C
--------------	------------	----	---	---	-------	--	--	--	------

AS.MED.PR.PL	Generalist	PL	1	5	4,869				CS L
--------------	------------	----	---	---	-------	--	--	--	------

AS.MED.PL	Generalist	PL	1	3	4,576				susp
-----------	------------	----	---	---	-------	--	--	--	------

AS.MED.DEB.PL	Generalist	PL	1	4	4,556				
---------------	------------	----	---	---	-------	--	--	--	--

AS.MED.DEB.PL	Generalist	PL	1	0	3,750				
---------------	------------	----	---	---	-------	--	--	--	--

PERSONAL AUXILIAR

INFIRMIERA		G	1		2,350				
------------	--	---	---	--	-------	--	--	--	--

ICIUL DE ANATOMIE PATOLOGICĂ
MEDICI

MED.PRIMAR SEF S	Anat-patol.g	S	1	4	19,740	20,727			
------------------	--------------	---	---	---	--------	--------	--	--	--

MED.PRIMAR	Anat-patol.g	S	1	3	19,259				
------------	--------------	---	---	---	--------	--	--	--	--

MED.PRIMAR	Anat-patol.g	S	1	4	19,740				
------------	--------------	---	---	---	--------	--	--	--	--

CADRE MEDII

AS.MED.PR.PL	Generalist	PL	1	4	6,159				
--------------	------------	----	---	---	-------	--	--	--	--

AS.MED.PR.PL	Generalist	PL	1	4	6,159				
--------------	------------	----	---	---	-------	--	--	--	--

AS.MED.PR.PL	Generalist	PL	1	5	6,579				
--------------	------------	----	---	---	-------	--	--	--	--

AS.MED.PL	Generalist	PL	1						vacant
-----------	------------	----	---	--	--	--	--	--	--------

AUTOPSIER

AUTOPSIER M	Autopsier	M	1	2	4,695				
-------------	-----------	---	---	---	-------	--	--	--	--

PERSONAL AUXILIAR

INGRIJITOARE		G	1	4	3,994				
--------------	--	---	---	---	-------	--	--	--	--

Funcția, grad profesional treapta	Specialitatea	Niv. stud.	Cuant. post	Gradatia	Salariu lege 151/2017.				Obs.
-----------------------------------	---------------	------------	-------------	----------	------------------------	--	--	--	------

DEPARTAMENT PREVENIRE A INFECTIILOR ASOCIATE ASISTENȚEI MEDICALE

MEDICI

MED.SPECIALIST	Epidemiologie	S	1	5	12,328				
----------------	---------------	---	---	---	--------	--	--	--	--

CADRE MEDII

AS.MED.PR.PL	Igiena	PL	1	5	4,869				
AS.MED.PL	Igiena	PL	1	3	4,576				

REȚEA DE SERVICII MEDICALE

REȚEA DE ONCOLOGIE MEDICALĂ

MEDICI

MED.PRIMAR	Oncologie	S	0.5		5,616				vacant
MED.REZ.AN II	Oncologie	S	1		3,058				vacant

CADRE MEDII

AS.MED.PL	Generalist	PL			2,058				vacant
-----------	------------	----	--	--	-------	--	--	--	--------

REȚEA DE SERVICII MEDICALE - DIABET ZAHARAT, NUTRIȚIE ȘI BOLI METABOLICE

CADRE MEDII

AS.MED.PL	Generalist	PL	1	4	4,690				
AS.MED.DEB.PL	Generalist	PL	1		3,750				vacant

REȚEA DE SERVICII MEDICALE - STRUCTURI FUNCȚIONALE

DIETETICĂ

AS.MED.PR.PL	Dietetica	PL	1	5	5,356				
--------------	-----------	----	---	---	-------	--	--	--	--

REȚEA DE SERVICII MEDICALE - REGISTRARI - STATISTICĂ

AS.MED.PR.PL-ST	Generalist	PL	1	5	4,869				
REG.MEDICAL.BI		PL	1	1	3,090				
AS.MED.PR.PL-B.I	Generalist	PL	1	5	4,869				
REG.MED.		M	1	0	3,750				
REG.MED.DEB		M	1	1	3,090				
REG.MED.DEB		M	1	1	3,090				
REG.MED.DEB		M	1	1	3,090				
REG.MED.DEB		M	1	1	3,090				vacant
REG.MED.DEB		M	1	1	3,090				vacant
REG.MED.DEB		M	1	1	3,090				vacant

REȚEA DE SERVICII MEDICALE - STAT - TRANSFERURI

REȚEA DE PLANIFICARE FAMILIALĂ

MEDICI

MED.PRIMAR	Med.fam.	S	1	5	15,566				
MED.SPEC	Med.fam.	S	1	5	12,328				vacant

CADRE MEDII

AS.MED.PR.PL	Generalist	PL	1	5	4,869				
AS.MED.PR.PL	Generalist	PL	1	5	4,869				vacant

Funcția, grad profesional treapta	Specialitatea	Niv. stud	Cuant. post	Gradatia	Salariu Lege 153/2017.				Obs.
-----------------------------------	---------------	-----------	-------------	----------	------------------------	--	--	--	------

ET DE STAT - TRANSFERURI

ENSAR T.B.C.

MEDICI

MED SPEC	Fiziologie	S	1	5	12,328				
----------	------------	---	---	---	--------	--	--	--	--

CADRE MEDII

AS.MED.PR.PL	Generalist	PL	1	5	4,869				
--------------	------------	----	---	---	-------	--	--	--	--

AS.MED.PR.PL	Generalist	PL	1	5	4,869				
--------------	------------	----	---	---	-------	--	--	--	--

AS.MED.PL	Generalist	PL	1	4					
-----------	------------	----	---	---	--	--	--	--	--

RATOR B.K.

MEDICI

MED.PRIMAR	Laborator	S	1	3	14,816				
------------	-----------	---	---	---	--------	--	--	--	--

CADRE MEDII

AS.MED.PR.M	Laborator	M	1	5	4,794				
-------------	-----------	---	---	---	-------	--	--	--	--

AS.MED.PL	Generalist	PL	1	5	4,807				
-----------	------------	----	---	---	-------	--	--	--	--

PERSONAL AUXILIAR

INGRIJITOARE		G	1	3	2,756				
--------------	--	---	---	---	-------	--	--	--	--

ULATORIU INTEGRAT SPITALULUI

NET MEDICINĂ INTERNĂ

CADRE MEDII

AS.MED.S	Medicala	PL	1	1	4,486				
----------	----------	----	---	---	-------	--	--	--	--

AS.MED.PL	Generalist	PL	1		2,058				vacant
-----------	------------	----	---	--	-------	--	--	--	--------

NET MEDICINĂ INTERNĂ C.S. Capreni

CADRE MEDII

AS.MED.S	Generalist	S	1	1	4,486				
----------	------------	---	---	---	-------	--	--	--	--

NET MEDICINĂ INTERNĂ C.S. Tg.Logresti

CADRE MEDII

AS.MED.PL	Generalist	PL	1	3	4,576				
-----------	------------	----	---	---	-------	--	--	--	--

NET PNEUMOLOGIE

CADRE MEDII

AS.MED.PL	Generalist	PL	1	3	4,634				
-----------	------------	----	---	---	-------	--	--	--	--

AS.MED.PL	Generalist	PL	1	0	3,750				vacant
-----------	------------	----	---	---	-------	--	--	--	--------

NET NEFROLOGIE

CADRE MEDII

AS.MED.DEB.PL	Generalist	PL	1	2	4,233				
---------------	------------	----	---	---	-------	--	--	--	--

AS.MED.PL	Generalist	PL	1		2,058				vacant
-----------	------------	----	---	--	-------	--	--	--	--------

NET CARDIOLOGIE

CADRE MEDII

AS.MED.PL	Generalist	PL	1	5	4,807				
-----------	------------	----	---	---	-------	--	--	--	--

AS.MED.PL	Generalist	PL	1	0	3,860				vacant
-----------	------------	----	---	---	-------	--	--	--	--------

Funcția,grad profesional treapta	Specialitatea		Cuant. post	Gradatia	Salariu Lege 153/2017.				Obs.
----------------------------------	---------------	--	-------------	----------	------------------------	--	--	--	------

LATORIU INTEGRAT SPITALULUI
SET NEUROLOGIE
CADRE MEDII

AS MED PR.PL	Generalist	PL	1	4	4,750				susp
AS MED PL	Generalist	PL	1	3	4,233				

SET PSIHIATRIE
CADRE MEDII

AS MED PR.PL	Generalist	PL	1	3	4,634				
AS MED.PL	Generalist	PL	1		3,860				vacant

SET PSIHIATRIE PEDIATRICA
MEDICI

MED.SPECIALIST	Psihiatrie	S	1	2	11,175				vacant
----------------	------------	---	---	---	--------	--	--	--	--------

CADRE MEDII

AS MED PR.PL	Generalist	PL	1	0	3,750				vacant
--------------	------------	----	---	---	-------	--	--	--	--------

SET R.M.F.B.
ALT PERSONAL CU STUDII SUPERIOARE

FIZIO-KINETOT	Fizio-kinet	S	1	0	3,590				
---------------	-------------	---	---	---	-------	--	--	--	--

CADRE MEDII

AS.MED.PL	Generalist	PL	1	0	3,750				susp.
AS.MED.PL	Generalist	PL	1	5	4,807				
AS.MED.PR.PL	Maseor	PL	1	5	4,869				maseor

SET PEDIATRIE
CADRE MEDII

AS.MED.PR.PL	Pediatric	PL	1	5	4,869				
AS.MED.PL	Generalist	PL	1		3,750				vacant

SET CHIRURGIE GENERALĂ
CADRE MEDII

AS.MED.PR.PL	Generalist	PL	1	3	4,634				
AS.MED.PL	Generalist	PL	1	1	3,860				vacant

SET CHIRURGIE PLASTICĂ, MICROCHIR. RECONSTR.
MEDICI

MED.SPECIALIST	Chir.plastica	S	1	2	11,175				vacant
----------------	---------------	---	---	---	--------	--	--	--	--------

CADRE MEDII

AS.MED.PR.PL	Generalist	PL	1	3	4,634				
--------------	------------	----	---	---	-------	--	--	--	--

SET CHIRURGIE TORACICĂ
MEDICI

MED.SPECIALIST	Chir.toracica	S	1	2	11,175				vacant
----------------	---------------	---	---	---	--------	--	--	--	--------

CADRE MEDII

AS.MED.DEB.PL	Generalist	PL	1	0	3,750				vacant
---------------	------------	----	---	---	-------	--	--	--	--------

SET O.R.L.
CADRE MEDII

AS.MED.PL	Generalist	PL	1	0	3,860				
AS.MED.DEB.PL	Generalist	PL	1	0	3,750				vacant

SET OFTALMOLOGIE
CADRE MEDII

AS.MED.PR.PL	Generalist	PL	1	5	4,869				
AS.MED.PL	Generalist	PL	1	0	3,750				vacant

Funcția, grad profesional treaptă	Specialitatea	Niv. stud	Cuant. post	Gradat::	Salariu lege 153/2017.					Obs.
-----------------------------------	---------------	-----------	-------------	----------	------------------------	--	--	--	--	------

**LATORIU INTEGRAT SPITALULUI
**SET ORTOPEDIE - TRAUMATOLOGIE
CADRE MEDII****

AS.MED.PR.PL	Generalist	PL	1	3	4,634					
AS.MED.PL	Generalist	PL	1	1	3,750					vacant

**SET UROLOGIE
CADRE MEDII**

AS.MED.PL	Generalist	PL	1	1	4,150					
AS.MED.PL	Generalist	PL	1	0	3,860					vacant

**SET NEUROCHIRURGIE
MEDICI**

MED.SPECIALIST	Neuro-chirurg.	S	1	2	11,075					vacant
----------------	----------------	---	---	---	--------	--	--	--	--	--------

**SET NEUROLOGIE PEDIATRICA
MEDICI**

MED.REZ.AN.IV	Neurologie	S	1	3	8,650					susp
---------------	------------	---	---	---	-------	--	--	--	--	------

CADRE MEDII

AS.MED.DEB.PL.	Generalist	PL	1	0	3,750					vacant
----------------	------------	----	---	---	-------	--	--	--	--	--------

SET OBSTETRICĂ GINECOLOGIE

CADRE MEDII

AS.MED.PR.PL	Generalist	PL	1	4	4,750					
AS.MED.PL	Generalist	PL	1		2,058					vacant

SET BOLI INFECȚIOASE

MEDICI

MED.SPECIALIST	Boli inf.	S	1	2	11,175					vacant
----------------	-----------	---	---	---	--------	--	--	--	--	--------

CADRE MEDII

AS.MED.DEB.PL.	Generalist	PL	1	0	3,750					vacant
----------------	------------	----	---	---	-------	--	--	--	--	--------

SET DERMATO-VENEROLOGIE

MEDICI

MED.SPECIALIST	Derm.-vener.	S	1	2	11,175					
----------------	--------------	---	---	---	--------	--	--	--	--	--

CADRE MEDII

AS.MED.PL.	Generalist	PL	1	0	3,860					
------------	------------	----	---	---	-------	--	--	--	--	--

SET CHIRURGIE PEDIATRICA

MEDICI

MED.SPECIALIST	Chir.pediatr.	S	1	2	11,175					vacant
----------------	---------------	---	---	---	--------	--	--	--	--	--------

CADRE MEDII

AS.MED.PL.	Generalist	PL	1	0	3,860					vacant
------------	------------	----	---	---	-------	--	--	--	--	--------

SET ENDOCRINOLOGIE

MEDICI

MED.SPECIALIST	Endocrinologie	S	1	2	11,175					susp.
----------------	----------------	---	---	---	--------	--	--	--	--	-------

MED.SPECIALIST	Endocrinologie	S	1	3	11,734					
----------------	----------------	---	---	---	--------	--	--	--	--	--

MED.REZ.AN.I	Endocrinologie	S	1	0	5,700					
--------------	----------------	---	---	---	-------	--	--	--	--	--

CADRE MEDII

AS.MED.PL	Generalist	PL	1	3	4,576					
-----------	------------	----	---	---	-------	--	--	--	--	--

AS.MED.DEB.PL.	Generalist	PL	1	0	3,750					vacant
----------------	------------	----	---	---	-------	--	--	--	--	--------

SET CHIRURGIE O.M.F.

MEDICI

MED.SPECIALIST	Chir.O.M.F.	S	1	3	11,734					
----------------	-------------	---	---	---	--------	--	--	--	--	--

CADRE MEDII

AS.MED.PL.	Generalist	PL	1	2	4,358					
------------	------------	----	---	---	-------	--	--	--	--	--

Funcția/post profesional/trăpăta	Specialitatea	Niv. stud	Cuant. post	Cantitatea	Salariu la gr 15/3/2017.				Obs.
----------------------------------	---------------	-----------	-------------	------------	--------------------------	--	--	--	------

BLATORIU INTEGRAT SPITALULUI
NET ALERGOLOGIE
MEDICI

MED.SPECIALIST	Alergologie	S	1	3	11,734				
----------------	-------------	---	---	---	--------	--	--	--	--

CADRE MEDII

AS.MED.PL.	Generalist	PL	1	0	3,860				vacant
------------	------------	----	---	---	-------	--	--	--	--------

NET GASTROENTEROLOGIE
MEDICI

MED.REZ.AN.III	Gastro -Enter.	S	1		2,635				susp
----------------	----------------	---	---	--	-------	--	--	--	------

CADRE MEDII

AS.MED.PL.	Generalist	PL	1		2,500				vacant
------------	------------	----	---	--	-------	--	--	--	--------

NET GERIATRIE SI GERONTOLOGIE
MEDICI

MED.REZ.AN.I	Geriatric	S	1	0	5,700				vacant
--------------	-----------	---	---	---	-------	--	--	--	--------

CADRE MEDII

AS.MED.DEB.PL	Generalist	PL	1	0	3,750				vacant
---------------	------------	----	---	---	-------	--	--	--	--------

NET HEMATOLOGIE
MEDICI

MED.SPECIALIST	Hematologie	S	1	4	12,027				
----------------	-------------	---	---	---	--------	--	--	--	--

CADRE MEDII

AS.MED.S	Generalist	PL	1	0	4,173				
----------	------------	----	---	---	-------	--	--	--	--

NET PSIHOLOGIE

PSIHOLOG SPEC	Psihologie	S	1	3	4,802				
---------------	------------	---	---	---	-------	--	--	--	--

PSIHOLOG	Psihologie	S	1	3	4,802				vacant
----------	------------	---	---	---	-------	--	--	--	--------

DRATOR EXPLORARI FUNCTIONALE
MEDICI

MED.SPEC	Interne	S	1	2	11,175				vacant
----------	---------	---	---	---	--------	--	--	--	--------

R
CADRE MEDII

REG.MED.PR.(S.M.)	Medicala	M	1	4	3,637				
-------------------	----------	---	---	---	-------	--	--	--	--

REG.MED.DEB	Medicala	M	1		2,350				vacant
-------------	----------	---	---	--	-------	--	--	--	--------

PERSONAL AUXILIAR

INGRIJITOARE		G	1		2,350				vacant
--------------	--	---	---	--	-------	--	--	--	--------

RAT FUNCTIONAL
ICIUL DE MANAGEMENT AL CALITĂȚII SERVICIILOR MEDICALE

MEDIC	Obst.-ginecol.	S	1		5,345				vacant
-------	----------------	---	---	--	-------	--	--	--	--------

MEDIC	Econ.sp.IA	S	1		3,434				vacant
-------	------------	---	---	--	-------	--	--	--	--------

REFERENT	Cons.jur	S	1		3,434				vacant
----------	----------	---	---	--	-------	--	--	--	--------

REFERENT	Generalist	PL	1		2,845				vacant
----------	------------	----	---	--	-------	--	--	--	--------

CONSILIER SPECIALITATE	Economist II	S	1	1	3,471				
------------------------	--------------	---	---	---	-------	--	--	--	--

ICIUL FINANCIAR - CONTABILITATE

ECONOMIST I.A		S	1	5	5,040				
---------------	--	---	---	---	-------	--	--	--	--

ECONOMIST I.A		S	1	5	5,040				rez.
---------------	--	---	---	---	-------	--	--	--	------

ECONOMIST I.A		S	1	5	5,040				
---------------	--	---	---	---	-------	--	--	--	--

ECONOMIST I.A		S	1	5	5,040				
---------------	--	---	---	---	-------	--	--	--	--

CONTABIL I.A		M	1	5	3,815				
--------------	--	---	---	---	-------	--	--	--	--

Funcția,grad profesional treapta	Specialitatea	Niv. stud	Cuant. post	Gradatia	Salariu Lege 153/2017.					Alt.
----------------------------------	---------------	-----------	-------------	----------	------------------------	--	--	--	--	------

AT FUNCTIONAL

U R.U.N.O.S.

ECONOMIST I A		S	1	5	5,040					
CONS.JUR. I.A.SEF B		S	1	4	4,605	5,218				
ECONOMIST II		S	1	2	3,644					
ECONOMIST DEB		S	1	1	2,963					

PARTIMENT JURIDIC

CONS.JURIDIC I.A			1	1	4,605					
------------------	--	--	---	---	-------	--	--	--	--	--

PARTIMENT INFORMATICA

ALT PERSONAL CU STUDII SUPERIOARE

ING.SIST - I A		S	1	4	4,969					
ANALIST AJUT.		M	1	2	3,384					
OPERATOR		S	1	2	3,644					vacant

RIT.MUNCHI - PSI, PROT.CIVILA SI SIT. DE URGENTA

REF.S.I.A		S	1		3,520					vacant
-----------	--	---	---	--	-------	--	--	--	--	--------

ICIUL ACHIZITII PUBLICE,APROVIZIONARE,TRANSPORT

ECONOMIST I A SEF S		S	1	3	3,351					
CONS.JUR.I.A		S	1	3	4,797					
ECONOMIST I A		S	1	4	3,520					
MAGAZINER I		M	1	5	3,662					
MUNC.(SOFER II)		G	1	5	3,835					
MUNC.(SOFER II)		G	1	5	3,835					

ALIMENTAR

MUNC II (BUCAT)		G	1	4	2,788					
MUNC I (BUCATAR)		G	1	5	3,572					
MUNC I (BUCATAR)		G	1	5	3,572					
MUNC I (BUCATAR)		G	1	5	3,572					
MUNC.IV (BUCATAR)		G	1	1	2,811					
MUNC I (BUCATAR)		G	1	5	3,572					
MUNC.II (BUCATAR)		G	1	4	2,788					
MUNC.IV (BUCATAR)		G	1	1	2,811					

C ADMINISTRATIV

REF.S.I.A		S	1	5	5,040					
SEC.DACT.I.A		M	1	5	3,914					
ARHIVAR I		M	1	2	3,161					

PARTIMENT TEHNIC

TEHNICIAN I.A.		M	1		2,330					vacant
TEHNICIAN I.A.		M	1		2,330					vacant

ATORIE, GARDEROBIER

INFIRMIERA		G	1	2	2,977					
INFIRMIERA		G	1	5	3,284					vacant
INFIRMIERA		G	1	1	2,836					
SPALATOREASA		G	1	1	2,499					vacant
SPALAT GEST		G	1	5	2,968					
SPALATOREASA		G	1	3	2,756					
SPALATOREASA		G	1	3	2,756					

Funcția și profesional treapta	Specialitatea	Niv. stud	Cuant. post	Gradul	Salariu Lege 153/2017.					
-----------------------------------	---------------	--------------	----------------	--------	------------------------------	--	--	--	--	--

PORTAR I		G	1	5	2,911					
PORTAR I		G	1	5	2,911					
PORTAR I		G	1	5	2,911					
PORTAR I		G	1	5	2,911					

RALĂ TERMICĂ

MUNC I (FOCHIST)		G	1	5	3,572					
MUNC II (FOCHIST)		G	1	5	3,462					
MUNC II (FOCHIST)		G	1	5	3,572					
MUNC.III (FOCHIST)		G	1	5	3,322					
MUNC.I (FOCHIST)		G	1	4	3,485					

PERSONAL DE ÎNȚREȚINERE ȘI DESERVIRE

MUNC I (ELECTR)		G	1	5	3,572					
MUNC I (ELECTR)		G	1	5	3,572					
MUNC II (INST)		G	1	5	3,462					
MUNC I (TIMPLAR)		G	1	5	3,572					
MUNC I (LENJ.)		G	1	5	3,572					
MUNC.IV (ZIDAR)		G	1	0	2,230					vacant
INGRIJITOARE		G	1	0	2,230					vacant

BRANCARDIERI PE UNITATE

BRANCARDIER		G	1	4	2,825					
BRANCARDIER		G	1	5	2,895					
BRANCARDIER		G	1	0	2,325					
BRANCARDIER		G	1	0	2,325					
BRANCARDIER		G	1	5	2,895					
BRANCARDIER		G	1	1	2,499					
BRANCARDIER		G	1	5	2,895					
BRANCARDIER		G	1	0	2,230					

24.0

22.0

TOTAL GENERAL				743.0						585.0
----------------------	--	--	--	-------	--	--	--	--	--	-------

MANAGER

Trziu Constantin
medic primar



DIRECTOR FINANCIAR CONTABIL

Ec.IA

Calmanu Diana

BIROU R.U.N.O.S.

Cons.jur.

Stoenescu Elena